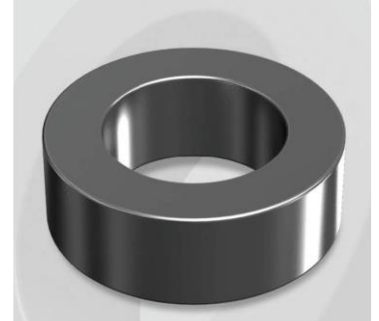


# CK1340019G

## Electrical Characteristics

Material	Permeability (μ)	AL ± 8% (nH/N <sup>2</sup> )	DCB (% min) @ 50 Oe	Coreloss (mW/cm <sup>2</sup> , max) @50kHz, 100G
Mega Flux	19	79	77.3	6.6

OD : 1325



## Core Dimensions

Dimensions		Uncoated		Coated		Color	Packaging
		(mm)	(inch)	(mm)	(inch)		
OD	(Max)	132.50	5.217	134.20	5.283	Black	Box Qty = 3 pcs
ID	(min)	78.60	3.094	77.00	3.031		
HT	(max)	40.60	1.598	42.00	1.654		

## Physical Characteristics

Cross Section (A)	Path Length (ℓ)	Window Area (Wa)	Volume (V)	Breakdown Voltage (Vac)
10.69 cm <sup>2</sup>	32.42 cm	46.61 cm <sup>2</sup>	346.700 cm <sup>3</sup>	1,000
1.66 in <sup>2</sup>	12.76 in	9,199,089 cmil	21.1556 in <sup>3</sup>	

## Winding Information

AWG Wire No. Dia. (cm)	Single Layer Turn Rdc. (Ω)	AWG Wire No. Dia. (cm)	Single Layer Turn Rdc. (Ω)	Winding length/turn (cm)				
10 0.267	N-A	19 0.0980	N-A	14.12				
11 0.238		40% winding factor Surface Area (cm <sup>2</sup> )						
12 0.213		747.18						
13 0.190		40% Wound Di.(mm)						
14 0.171		OD ID HT						
15 0.153		153.59 50.41 64.99						
16 0.137								
17 0.122								
18 0.109								

## Typical DC Bias Performance

